

PLEASE CHECK WWW.MOLEX.COM FOR LATEST PART INFORMATION

Part Number: [0357303130](#)
Status: **Active**
Description: 3.96mm (.156") Diameter Pin Terminal, Brass, 0.40mm (.016") Thickness, Wire Range 14-20 AWG (2.00-0.52mm²), Flash Au Plated

Documents:

[Drawing \(PDF\)](#) [RoHS Certificate of Compliance \(PDF\)](#)
[Product Specification PS-35730-001 \(PDF\)](#)

General

Product Family	Crimp Terminals
Series	35730
Crimp Quality Equipment	Yes
Product Name	N/A

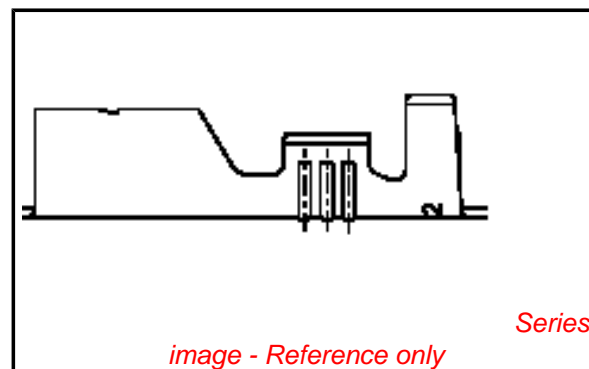
Physical

Gender	Female
Material - Metal	Brass
Material - Plating Mating	Gold
Material - Plating Termination	Gold
Packaging Type	Reel
Plating min: Mating (µin)	1.2
Plating min: Mating (µm)	0.03
Plating min: Termination (µin)	1.2
Plating min: Termination (µm)	0.03
Termination Interface: Style	Crimp or Compression
Wire Insulation Diameter	3.50mm (.138") max.
Wire Size AWG	14, 16, 18, 20
Wire Size mm ²	N/A

Material Info

Reference - Drawing Numbers

Product Specification	PS-35730-001
Sales Drawing	SD-35730-31*0



EU RoHS

**ELV and RoHS
Compliant**

REACH SVHC

Contains SVHC: No

Halogen-Free

Status

Halogen-Free

China RoHS



**Need more information on product
environmental compliance?**

Email productcompliance@molex.com
 For a multiple part number RoHS Certificate of Compliance, [click here](#)

Please visit the [Contact Us](#) section for any non-product compliance questions.

Search Parts in this Series

35730Series

Mates With

35730-30*0

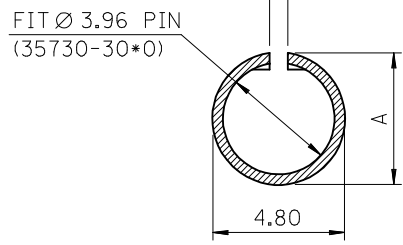
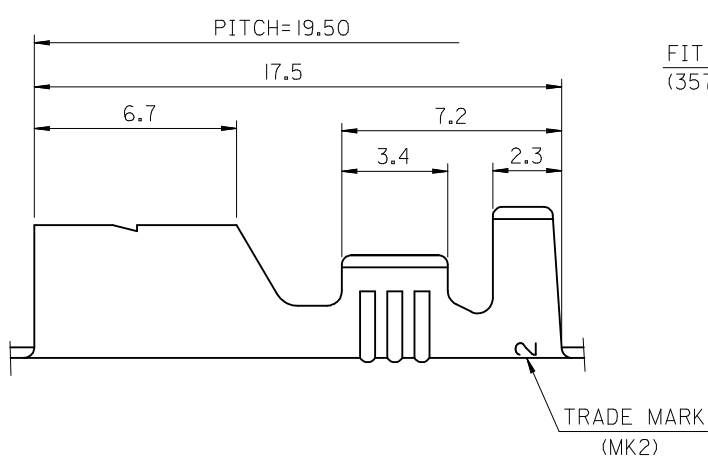
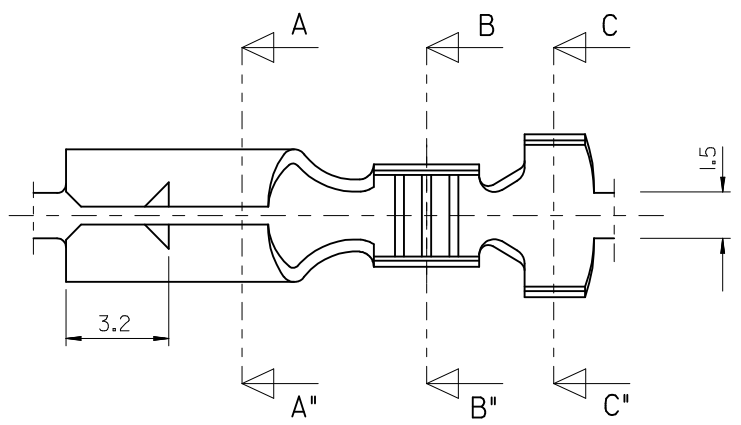
Application Tooling | [FAQ](#)

Tooling specifications and manuals are found by selecting the products below. Crimp Height Specifications are then contained in the Application Tooling Specification document.

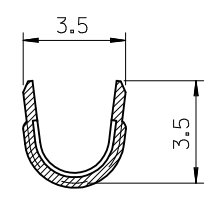
Japan

Description	Product #
End-Feed Applicator	0573243000

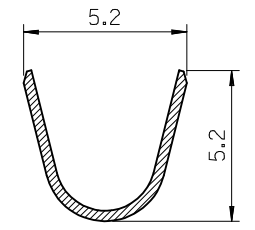
PLEASE CHECK WWW.MOLEX.COM FOR LATEST PART INFORMATION



SEC':A-A"



SEC':B-B"



SEC':C-C"

ENG.NO.	DIMENSION	
	A	B
35730-3100	4.50	0.70
35730-3110	4.60	0.90

TABLE1

NOTES

1. MATERIAL : BRASS
2. FINISH : 35730-3100 : UNPLATED
 @ 35730-3110 : TIN PLATED
 1.0 μm MIN. TIN PLATING
 OVERALL 0.3~0.8μm COPPER PLATING
3. PRODUCT SPECIFICATION : PS-35730-001
4. MATES WITH : 35730-30*0
5. APPLICABLE WIRE RANGE : AWG #20~#14

REVISED	EC NO: KOR2009-0115
	DRWN: JHPARK01 2009/01/29
	CHKD: W. YANG 2009/01/29
	APPR: YUNSIKKIM 2009/01/29

REV	DESCRIPTION
▼=0	QUALITY SYMBOLS
▽=0	

GENERAL TOLERANCES (UNLESS SPECIFIED)	
	mm INCH
4 PLACES	±--- ±---
3 PLACES	±--- ±---
2 PLACES	±0.20 ±---
1 PLACE	±0.30 ±---
ANGULAR ±---°	
DRAFT WHERE APPLICABLE MUST REMAIN WITHIN DIMENSIONS	

DIMENSION STYLE	
MM ONLY	
DRAWN BY	DATE
JS. KANG	1993/06/15
CHECKED BY	DATE
BK. CHOI	1993/06/15
APPROVED BY	DATE
CW. LEE	1993/06/15
MATERIAL NO.	
SEE NOTES	

SCALE	DESIGN UNITS	THIRD ANGLE PROJECTION	
6:1	METRIC		
TITLE		3.96 PIN RECEPTACLE	
MOLEX INCORPORATED			
DOCUMENT NO.		SHEET NO.	
SD-35730-31*0		1 OF 01	
THIS DRAWING CONTAINS INFORMATION THAT IS PROPRIETARY TO MOLEX INCORPORATED AND SHOULD NOT BE USED WITHOUT WRITTEN PERMISSION			